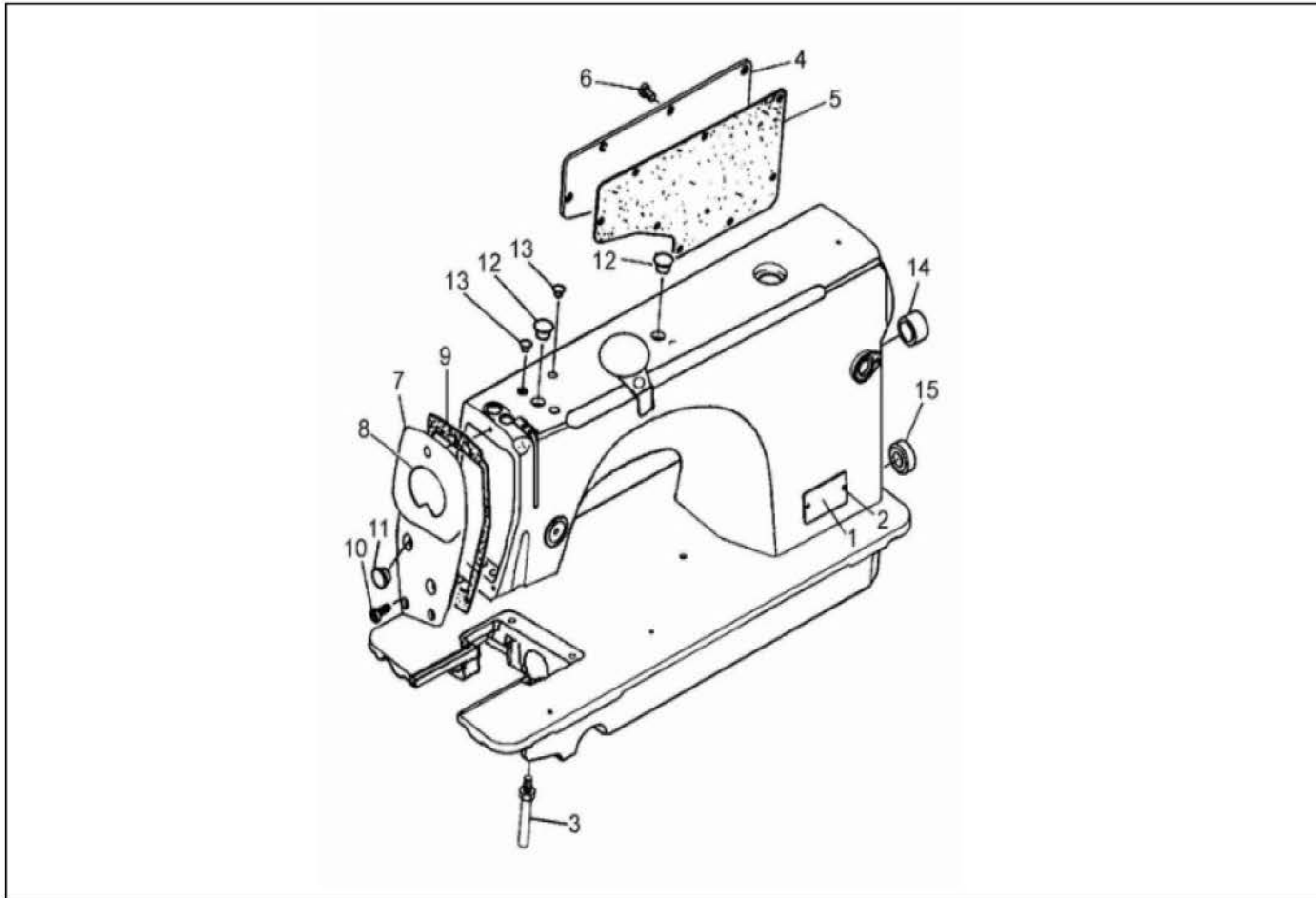


JACK

高速带刀平缝机系列产品 5559 High speed lockstitch sewing machine with edge cutter

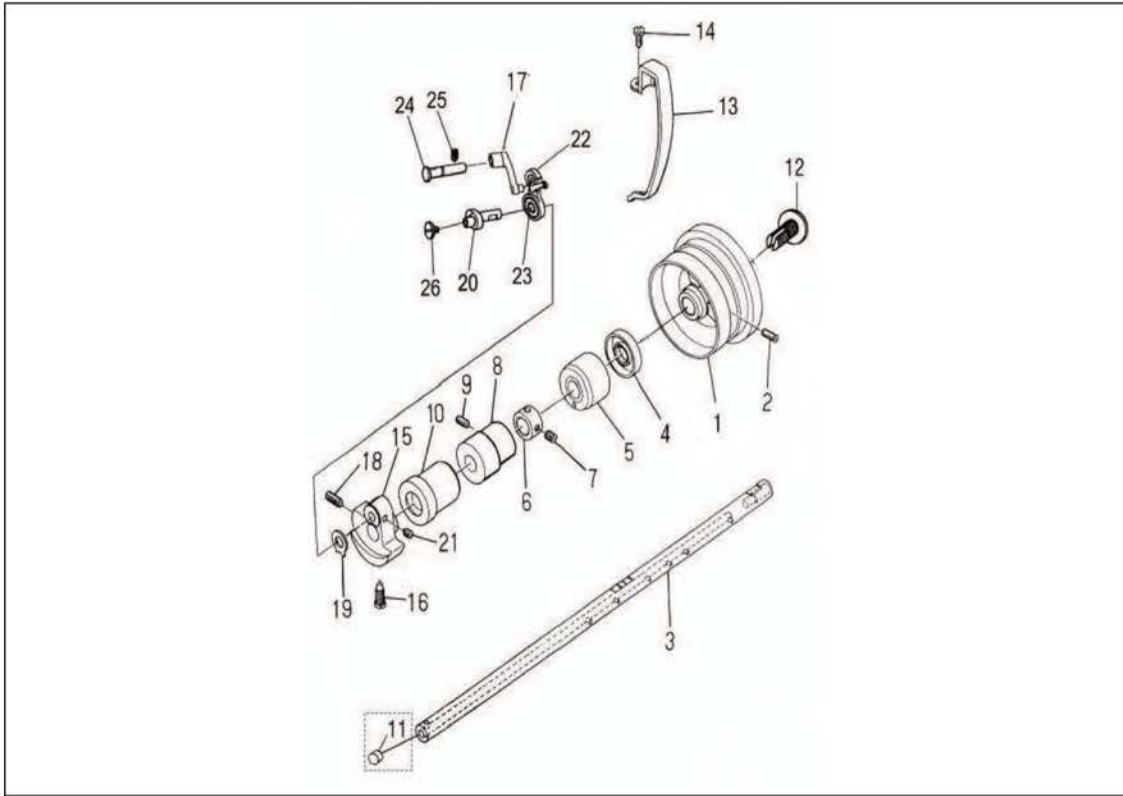


1. 机壳分组件 Arm bed components

序号 NO.	公司件号 Part NO.	名称 PartName	零件描述 Description	数量 Number
1	10137001	型号牌	Model pldte	1
2	R03001	型号牌铆钉	Model pldte rivet	2
3	101S12001	底板支柱	Bed screw stud	4
4	300097	后窗板	Side plate	1
5	10322001	后窗板垫	Gasket	1
6	101S11001	螺钉SM3/16 " ×28 L=9	Screw SM3/16 " ×28 L=9	8
7	301016	面板	Face plate arm	1
8	10131021	商标牌 (桃型商标牌)	Plate with trademark	1
9	12822001	面板垫	Gasket	1
10	128S11001	面板螺钉SM3/16 " ×28 L=14	Screw SM3/16 " ×28 L=14	3
11	10122003	面板调节螺孔塞	Rubber plug	2
12	10122004	针杆曲柄螺孔塞	Rubber plug	2
13	10122005	挑线连杆销螺孔塞	Rubber plug	1
14	10122006	送料调节器孔塞	Rubber plug	1
15	10122007	下轴工艺孔塞	Rubber plug	1

JACK

高速带刀平缝机系列产品 5559 High speed lockstitch sewing machine with edge cutter

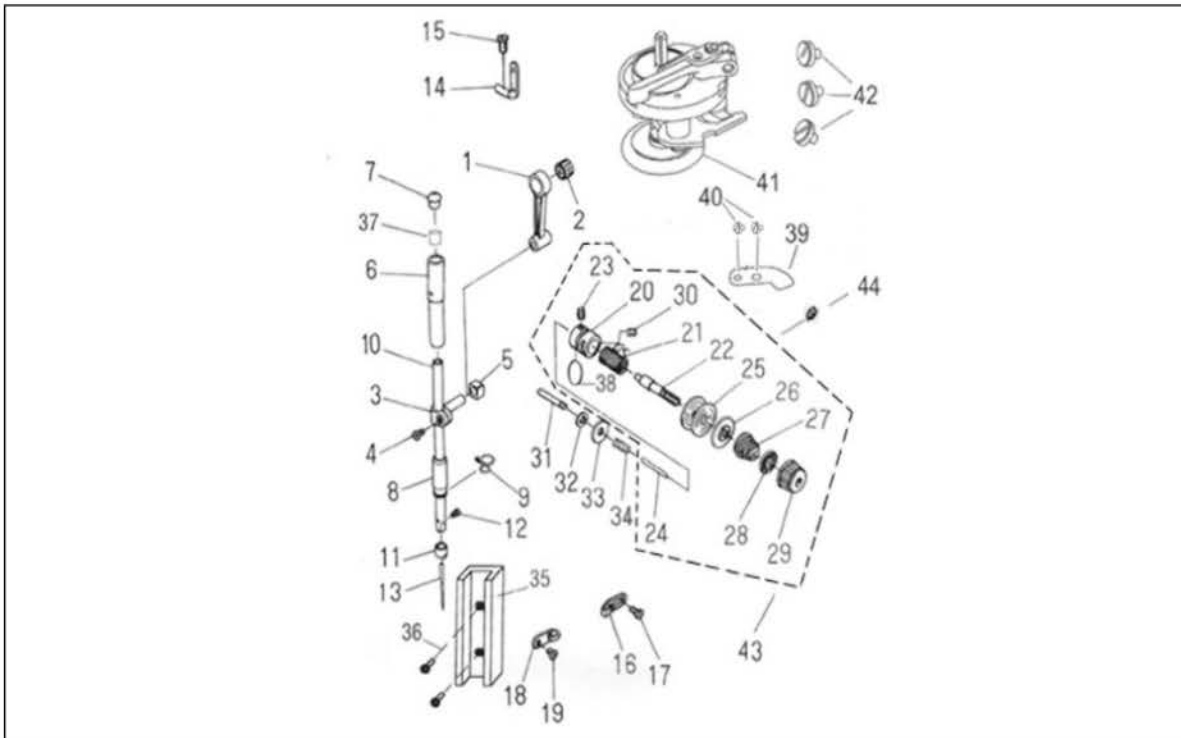


2. 上轴、挑线分组件 Main shaft、take-up components

序号 NO.	公司件号 Part NO.	名称 PartName	零件描述 Description	数量 Number
1	300092	上轮	Hand wheel	1
2	101S15001	上轮螺钉SM15/64 " ×28 L=15	Screw SM15/64 " ×28 L=15	2
3	12202001	主轴 (无油)	Main shaft	1
	12802010	上轴 (有油)	Main shaft (oil)	1
4	10122008	上轴油封	Main shaft	1
5	10103001	上轴后轴套	Main shaft bushing, rear	1
6	10108001	上轴挡圈	Thrust collar asm	1
7	101S15002	螺钉SM1/4 " ×40 L=6	Screw SM1/4 " ×40 L=6	2
8	12203002	主轴中轴套	Brshing, intermediate	1
9	101S15006	夹线器螺钉SM15/64 " ×28 L=7	Screw SM15/64 " ×28 L=7	1
10	1220300100	上轴前轴套分部件	main shaft bushing, front	1
	1280300500	上轴前套分部件 (有油)	main shaft bushing, front	1
11	10122012	上轴孔塞 (有油)	Rubber plug	1
12	101S30001	上轴安全螺钉SM5/16 " ×24 L=14	Screw SM5/16 " ×24 L=14	1
13	300611	挑线杆护罩 (5559WB)	Thread takeup lever cover	1
13	300095	挑线杆护罩	Thread takeup lever cover	1
14	101S11004	螺钉 SM3/16 " ×28 L=7	Screw SM3/16 " ×28 L=6	1
15	12804001	针杆曲柄	Counterweight	1
16	101S11003	针杆曲柄定位螺钉SM9/32 " ×28 L=16	Screw SM9/32 " ×28 L=16	1
17	12205001	挑线连杆	Thread takeup crank	1
18	101S15004	针杆曲柄紧固螺钉SM9/32 " ×28 L=16	Screw SM9/32 " ×28 L=16	1
19	10112003	针杆曲柄护板	Counterweight protecting plate	1
20	1220400200	挑线曲柄分部件	Needle bar crank asm	1
	1011000100	挑线曲柄分部件 (有油)	Needle bar crank asm	1
21	101S15002	送料轴挡圈螺钉 SM1/4 " ×40 L=6	Screw SM1/4 " ×40 L=6	2
22	1223800100	挑线杆分组件	Thread takeup lever asm	1
23	B04008	GB/278轴承698ZZ	Needle bearing	1
24	12226001	挑线连杆销	Thread takeup crank shaft	1
25	101S15001	上轮螺钉 SM15/64 " ×28 L=15	Screw SM15/64 " ×28 L=15	1
26	101S17001	挑线曲柄螺钉 (左旋) SM9/64 " ×40 L=6	Screw SM9/64 " ×40 L=6	1

JACK

高速带刀平缝机系列产品 5559 High speed lockstitch sewing machine with edge cutter

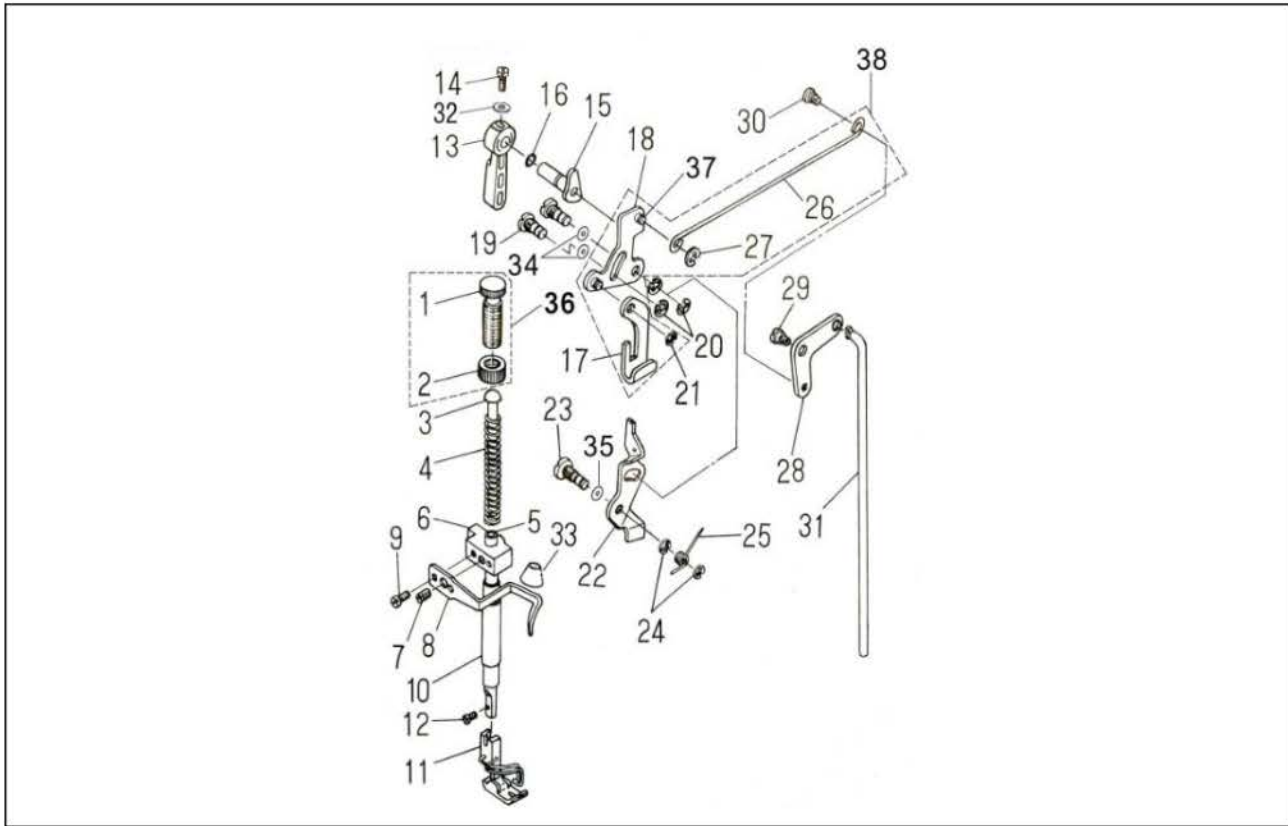


3. 针杆、夹线分组件 Needle bar、thread tension components

序号 NO.	公司件号 Part NO.	名称 PartName	零件描述 Description	数量 Number
1	12205002	针杆连杆组件	Needle bar crank rod	1
	10105002	针杆连杆(有油)	Needle bar crank rod(oil)	1
2	B04008	GB/278轴承698ZZ	Needle bearing	1
3	10138002	针杆连接柱	Needle bar connection asm	1
4	101S11005	螺钉 SM9/64 " × 40 L=6	Screw SM9/64 " × 40 L=6	1
5	10109001	针杆连接柱滑块	slide block	1
6	10103009	针杆上衬套	Needle bar bushing, upper	1
7	10122013	针杆上衬套孔塞	Cap	1
8	10103010	针杆下衬套	Needle bar bushing, lower	1
9	10113009	针杆下轴套线勾	Needle bar thred guide	1
10	12802008	针杆	Needel bar(no oil)	1
	12802009	针杆(有油)	Needel bar(oil)	1
11	12813002	针杆线勾	Needel bar thread guide	1
12	101S11006	支针螺钉 SM1/8 " × 44 L=4.5	Screw SM1/8 " × 44 L=4.5	1
13	10117001	机针(14#)	Needel	1
14	10113003	二眼线勾	Twohole thread eyelet	1
15	101S11004	螺钉 SM3/16 " × 28 L=6	Screw SM3/16 " × 28 L=6	1
16	10113004	右线勾	Frsmc thread guide ,right	1
17	101S11007	右线勾螺钉 SM11/64 " × 40 L=6	Screw SM11/64 " × 40 L=6	1
18	10113005	左线勾	Frsmc thread guide ,left	1
19	101S11007	螺钉 SM11/64 " × 40 L=6	Screw SM11/64 " × 40 L=6	1
20	480003	夹线器座(电镀后)	Tension post socket	1
21	10127021	挑线簧(毛坯)	Take up spring	1
22	101S30002	夹线螺钉SM1/4 " × 40 L=17.5	Screw SM1/4 " × 40 L=17.5	1
23	101S15005	夹线螺钉紧固螺钉 SM9/64 " × 40 L=5.5	Screw SM9/64 " × 40 L=5.5	1
24	10126002	松线钉	Thread release pin	1
25	480001	夹线板	Tension disc	2
26	10112006	松线板	Tension disc holder	1
27	10127020	夹线簧	Tension spring	1
28	10112007	夹线制动板	Tension disc stopper	1
29	101S16052	夹线螺母 SM1/4 " × 40 L=10	Tension nut SM1/4 " × 40 L=10	1
30	101S15006	螺钉 SM15/64 " × 28 L=7	Screw SM15/64 " × 28 L=7	2
31	10126003	松线辅钉	Tension release supproting pin	1
32	H05012	GB/T896-1986挡圈4	Snap ring4	1
33	10128001	松线辅钉垫片	Washer plate	1
34	10127003	松线辅钉弹簧	Tension release pin spring	1
35	10109002	针杆接头滑块导轨	Needel bar trough	1
36	101S11008	滑块导轨螺钉 SM11/64 " × 40 L=8	Screw SM11/64 " × 40 L=8	2
37	10123002	针杆上毡塞	Oil felt for needel bar	1
38	10122014	O型圈	Rubber ring	1
39	11419001	割线刀	Knife	1
40	401S11040	割线刀螺钉 SM9/64 " × 40 L=5	Screw SM9/64 " × 40 L=5	2
41	1143100100	绕线器组件	Bobbin winder base components	1
42	114S11003	绕线器轮螺钉 SM11/64 " × 28 L=10	Screw SM11/64 " × 28 L=10	3
43	400507	夹线器组件	thread tension asm.	1
44	101S15006	夹线器螺钉 SM15/64 " × 28 L=7	thread tension screwSM15/64 " × 28 L=7	1

JACK

高速带刀平缝机系列产品 5559 High speed lockstitch sewing machine with edge cutter

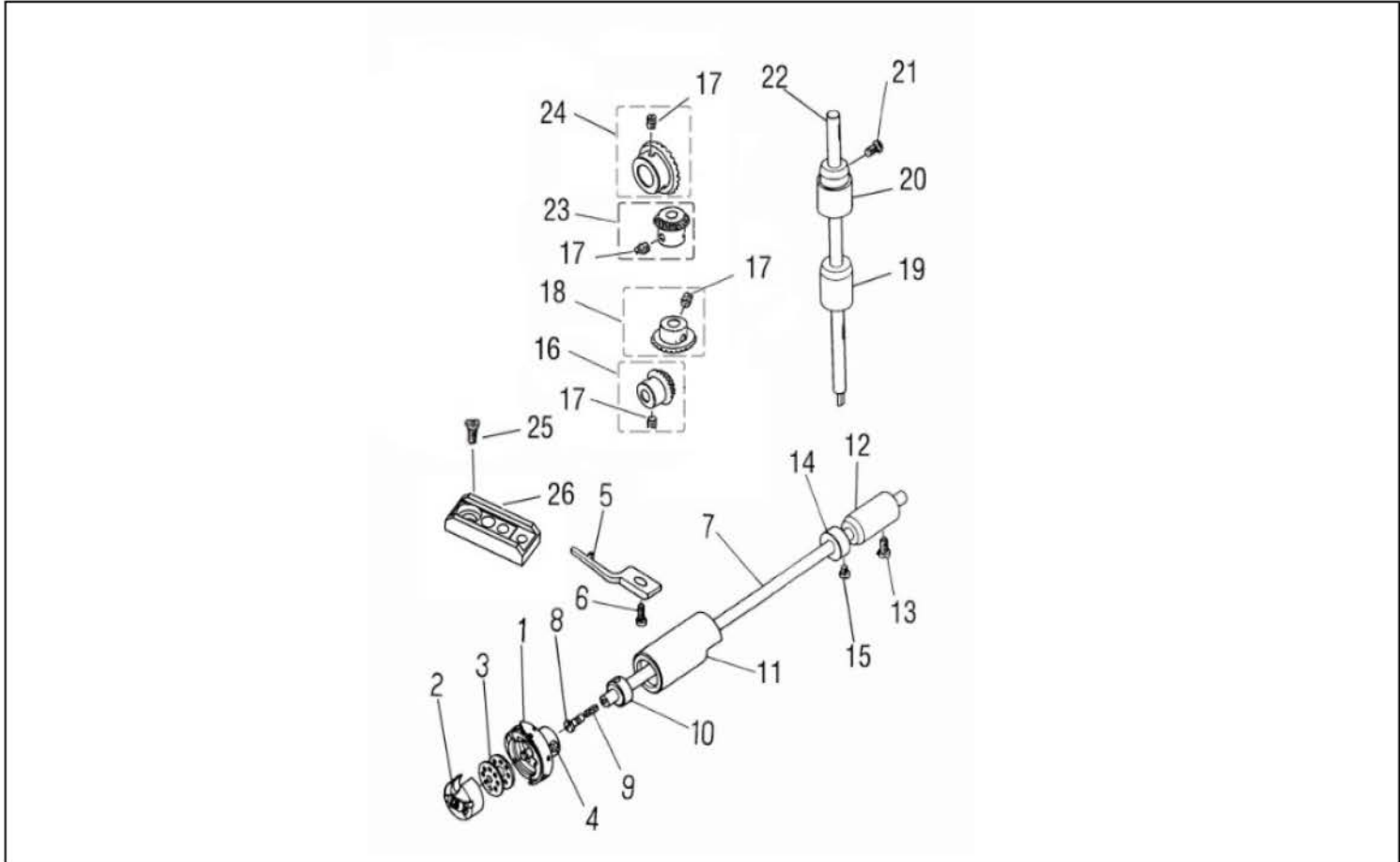


4. 压料分组件 Presser bar components

序号 NO.	公司件号 Part NO.	名称 PartName	零件描述 Description	数量 Number
1	10111034	调压螺钉	Presser spring regulator	1
2	10111036	调压螺母 M1/2"×28 L=8	NutS M1/2"×28 L=8	1
3	10102003	调压导杆	Presser guide bar	1
4	10127005	调压簧	Presser spring	1
5	12802002	压杆	Presser bar	1
6	12809003	压杆导架	Needle bar guide bracket	1
7	101S15007	压杆导架螺钉 SM1/4"×40 L=8	Screw SM1/4"×40 L=8	1
8	10413003	缓线调节钩	Presser bar thread guide	1
9	101S11005	螺钉 SM9/64"×40 L=6	Screw SM9/64"×40 L=6	2
10	10103012	压杆衬套	Presser bar bushing lower	2
11	1281600200	活压脚部件2(1/8")	presser foot asm.	1
12	101S11009	活压脚螺钉 SM9/64"×40 L=10.5	Screw SM9/64"×40 L=10.5	1
13	10111028	压脚扳手	Hand lifter	1
14	101S11010	压脚扳手螺钉 SM9/64"×40 L=11	Screw SM9/64"×40 L=11	1
15	1011000200	压脚扳手凸轮分部件	Hand lifter cam asm.	1
16	001004	GB/T3452.1-1992 O型圈4x1.8	Rubber ring	1
17	10112010	压脚升降板	Lifting lever	1
18	10112011	抬压脚前杠杆	Hand lifter link	1
19	101S20001	前杠杆螺纹销 SM5/16"×24 L=5.5	Link shaft SM5/16"×24 L=5.5	2
20	H05003	螺纹销开口挡圈	Snap ring	2
21	H05003	升降板连接特制开口挡圈	Lifting lever ring	3
22	10112012	松线顶板	Tension release plate	1
23	101S20002	松线顶板螺纹销	Tension release shaft	1
24	H05003	螺纹销开口挡圈	Snap ring	1
25	10127008	松线顶板复位簧	Tension release return spring	1
26	10112013	抬压脚拉杆	Lifting lever connecting rod	1
27	H05003	拉杆开口挡圈	Snap ring	1
28	10112014	抬压脚后杠杆	Lifting lever link	1
29	101S20003	后杠杆轴位螺钉SM15/64"×28 L=6.4	Hinge screw SM15/64"×28 L=6.4	1
30	101S20004	抬牙脚拉杆螺钉SM3/16"×32 L=5	Hinge screw SM3/16"×32 L=5	1
31	10112015	抬压脚顶杆	Connecting rod vertical	1
32	10128002	压脚扳手螺钉垫圈	Washer	1
33	30122022	压杆防油套	Presser bar defend oil bushing	1
34	10128015	螺纹销橡胶垫圈(厚)	Washer	2
35	10128016	螺纹销橡胶垫圈(薄)	Washer	1
36	10111027	调压螺钉组件	Presser spring regulator asm	1
37	10126005	抬压脚杠杆轴	Presser foot lifting lever shaft	2
38	1011200100	抬压脚前杠杆组件	Hand lifter link asm	1

JACK

高速带刀平缝机系列产品 5559 High speed lockstitch sewing machine with edge cutter

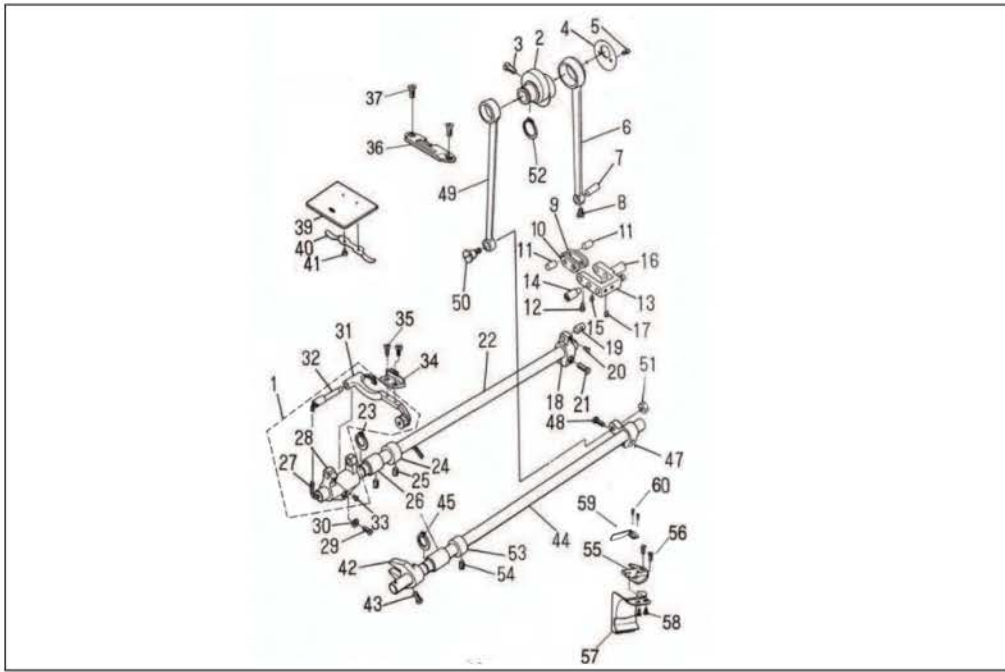


5. 勾线分组件 Hook driving shaft components

序号 NO.	公司件号 Part NO.	名称 PartName	零件描述 Description	数量 Number
1	10118504	旋梭 (广濑)	Hook asm	1
	10118001	旋梭 (国产)	Hook asm	1
2	10118501	梭壳 (广濑)	Bobbin case asm	1
	10118002	梭壳 (国产)	Bobbin case asm	1
3	10118003	梭心	Bobbin	1
4	101S15008	旋梭紧固螺钉 SM11/64 " × 40 L=4	Screw SM11/64 " × 40 L=4	1
5	10112016	旋梭定位钩	Positioning finger	1
6	101S11011	旋梭定位钩螺钉 SM11/64 " × 40 L=9.5	Screw SM11/64 " × 40 L=9.5	1
7	10102006	下轴	Hook driving shaft	1
8	101S30005	下轴限油螺钉 SM3/16 " × 32 L=13	Screw SM3/16 " × 32 L=13	1
9	10123003	下轴限油芯	Oil wick	1
10	10122015	下轴油封	Thust collar	1
11	1010301300	下轴前轴套分部件	Bushing asm. Front	1
12	10403012	下轴后轴套	Bushing ,rear	1
13	101S15006	螺钉 SM15/64 " × 28 L=7	Screw SM15/64 " × 28 L=7	1
14	10108002	下轴挡圈	Thust collar asm.	1
15	101S11012	下轴挡圈螺钉 SM11/64 " × 40 L=4.8	Screw SM11/64 " × 40 L=4.8	2
16	10425001	下轴伞齿轮	pinion asm.	1
17	101S15009	螺钉 SM1/4 " × 40 L=5.5	Screw SM1/4 " × 40 L=5.5	8
18	10425002	竖轴下伞齿轮	Gear asm large	1
19	10403013	竖轴下轴套	Upright shaft bushing, ower	1
20	10403014	竖轴上轴套	Bushing, upper	1
21	101S15006	螺钉 SM15/64 " × 28 L=7	Screw SM15/64 " × 28 L=7	1
22	10102007	竖轴	Upright shaft	1
23	10425003	竖轴上伞齿轮	pinion asm.	1
24	10425004	上轴伞齿轮	Gear asm	1
25	101S11011	旋梭定位钩螺钉 SM11/64 " × 40 L=9.5	Screw SM11/64 " × 40 L=9.5	1
26	12804004	定刀片固定架 (5559WB)	Fixed blade fixed frame (5559WB)	1

JACK

高速带刀平缝机系列产品 5559 High speed lockstitch sewing machine with edge cutter

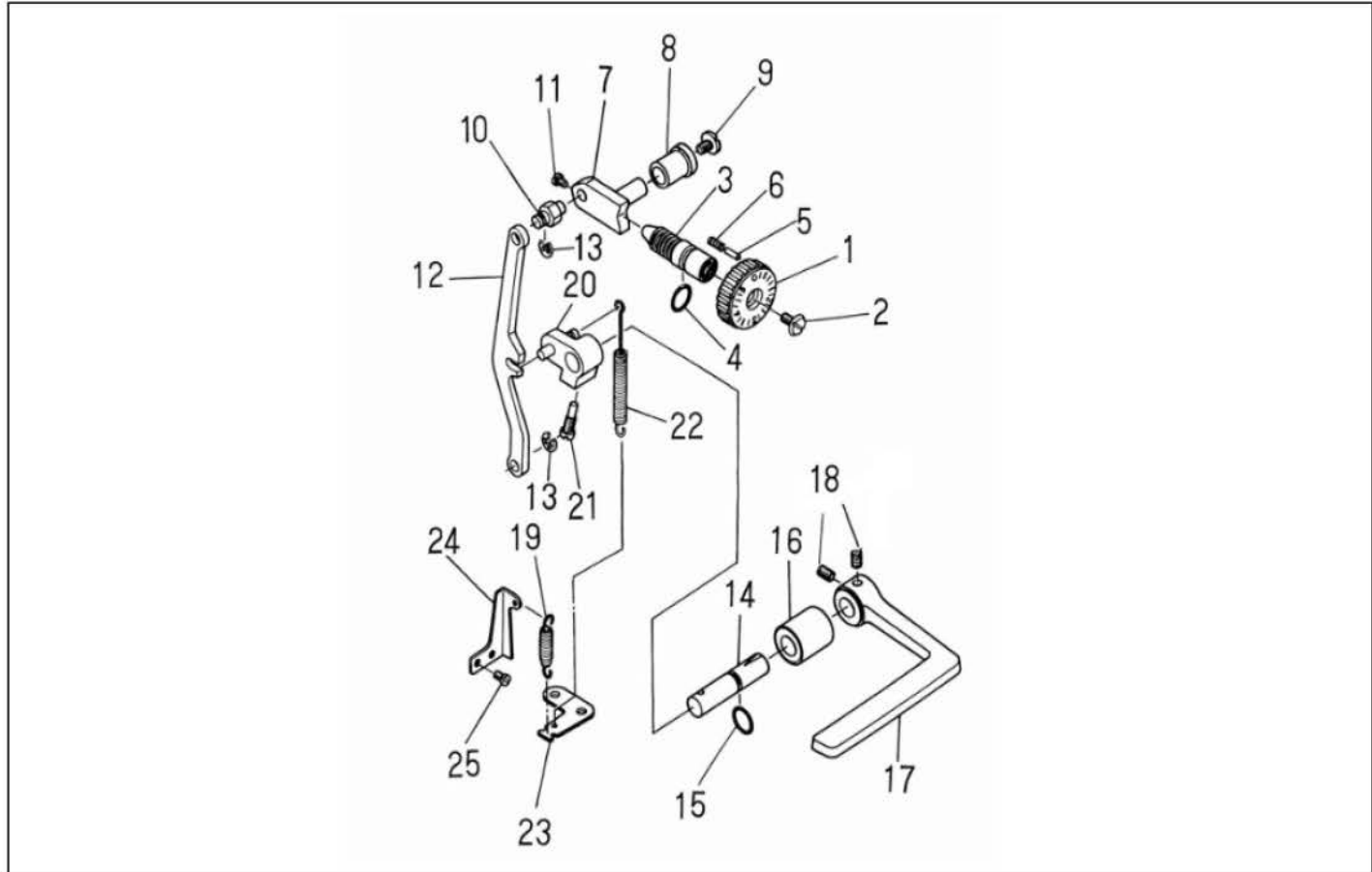


6. 送料分组件 Feed mechanism components

序号 No.	公司件号 Part NO.	名称 PartName	零件描述 Description	数量 Number
1	400672	牙架座组件(成品) (5559W)	Feed rocker asm. (5559W)	1
	400689	牙架座组件(成品) (5559WB)	Feed rocker asm. (5559WB)	1
2	400092	送料偏心轮	Feed frive eccentric cam	1
3	101S11013	送料偏心轮螺钉 SM1/4 " × 40 L=13	Screw SM1/4 " × 40 L=13	2
4	10112017	送料偏心轮盖板	Thust collar	1
5	101S11005	螺钉 SM9/64 " × 40 L=6	Screw SM9/64 " × 40 L=6	2
6	400091	送料连杆	Rocker shaft connecting rod	1
7	10126006	送料连杆销	Walking foot pin	1
8	101S11005	螺钉 SM9/64 " × 40 L=6	Screw SM9/64 " × 40 L=6	1
9	10409004	送料长摆动板	Walking foot link	2
10	10409005	送料短摆动板	Connecting link	2
11	10126007	短摆动板连杆销	Walking foot pin	2
12	101S11005	螺钉 SM9/64 " × 40 L=6	Screw SM9/64 " × 40 L=6	2
13	1010100200	送料摆动板座分部件	Walking foot adjusting link	1
14	10126009	送料摆动板座左销	adjusting link fulcrum shaft	1
15	101S15010	左销螺钉 SM15/64 " × 28 L=10.5	Screw SM15/64 " × 28 L=10.5	1
16	10126010	送料摆动板座右销	adjusting link fulcrum shaft	1
17	101S15010	左销螺钉 SM15/64 " × 28 L=10.5	Screw SM15/64 " × 28 L=10.5	1
18	10104002	送料曲柄	Feed rocker shaft crank asm	1
19	10126011	送料曲柄销	Walking foot pin	1
20	101S11005	螺钉 SM9/64 " × 40 L=6	Screw SM9/64 " × 40 L=6	1
21	101S11016	螺钉 SM3/16 " × 28 L=14	Screw SM3/16 " × 28 L=14	1
22	10102008	送料轴	Feed rocker shaft	1
23	H03001	GB/T894.1-1986挡圈15	Retaining ring	1
24	10108003	送料轴挡圈	Thust collar asm.	1
25	101S15002	螺钉 SM1/4 " × 40 L=6	Screw SM1/4 " × 40 L=6	4
26	10403015	轴套	Feed tpcler shaft bushing	2
27	10423005	送料轴油线	Oil wick	2
28	10101003	牙架座	Feed rocker asm.	1
29	101S11016	螺钉 SM3/16 " × 28 L=14	Screw SM3/16 " × 28 L=14	1
30	10128003	牙架座螺钉垫圈	Washer	1
31	10107001	牙架	Feed bar asm.	1
32	10126013	牙架销	Feed bar shaft	1
33	101S11025	复位板螺钉 SM11/64 " × 40 L=7	Screw SM11/64 " × 40 L=7	1
34	12814001	送料牙	Feed dog	1
35	101S11018	送料牙螺钉 SM1/8 " × 44 L=6	Screw SM1/8 " × 44 L=6	2
36	12815001	针板1/8	Throat plate	1
37	101S17002	针板螺钉 SM11/64 " × 40 L=6.4	Screw SM11/64 " × 40 L=6.4	2
39	10115002	推板	Slide plate	1
40	10127009	推板簧	Bed slide spring	1
41	101S11019	推板簧螺钉 SM3/32 " × 56 L=2	Screw SM3/32 " × 56 L=2	2
42	10104003	拍牙叉形曲柄	Driving shaft crank asm. Front	1
43	101S11020	拍牙叉形曲柄螺钉 SM11/64 " × 40 L=10.5	Screw SM11/64 " × 40 L=10.5	1
44	11202001	拍牙轴	Feed Driving shaft	1
45	H03001	GB/T894.1-1986挡圈15	Retaining ring	1
47	10104004	拍牙后曲柄	Rear crank asm.	1
48	101S11016	螺钉 SM3/16 " × 28 L=14	Screw SM3/16 " × 28 L=14	1
49	400093	拍牙连杆	Connecting rod	1
50	101S20005	拍牙连杆轴位螺钉 SM9/32 " × 28 L=13.5	Hinge Screw SM9/32 " × 28 L=13.5	1
51	101S16003	拍牙连杆轴位螺母 SM9/32 " × 28 L=4	Nut SM9/32 " × 28 L=4	1
52	H03002	GB/T894.1-1986挡圈20	Snap ring	1
53	10108003	拍牙轴挡圈	Thust collar asm.	1
54	101S15002	送料轴挡圈螺钉 SM1/4 " × 40 L=6	Screw SM1/4 " × 40 L=6	2
55	12815004	辅助针板	Throat plate	1
56	101S17002	针板螺钉 SM11/64 " × 40 L=6.4	Screw SM11/64 " × 40 L=6.4	2
57	12812003	碎布屑导向	Waste material	1
58	101S11019	推板簧螺钉 SM3/32 " × 56 L=2	Screw SM3/32 " × 56 L=2	2
59	12812002	碎布屑导向U	Waste material U	1
60	401S11040	碎布屑导向U螺钉 SM9/64 " × 40 L=5	Screw SM9/64 " × 40 L=5	2

JACK

高速带刀平缝机系列产品 5559 High speed lockstitch sewing machine with edge cutter

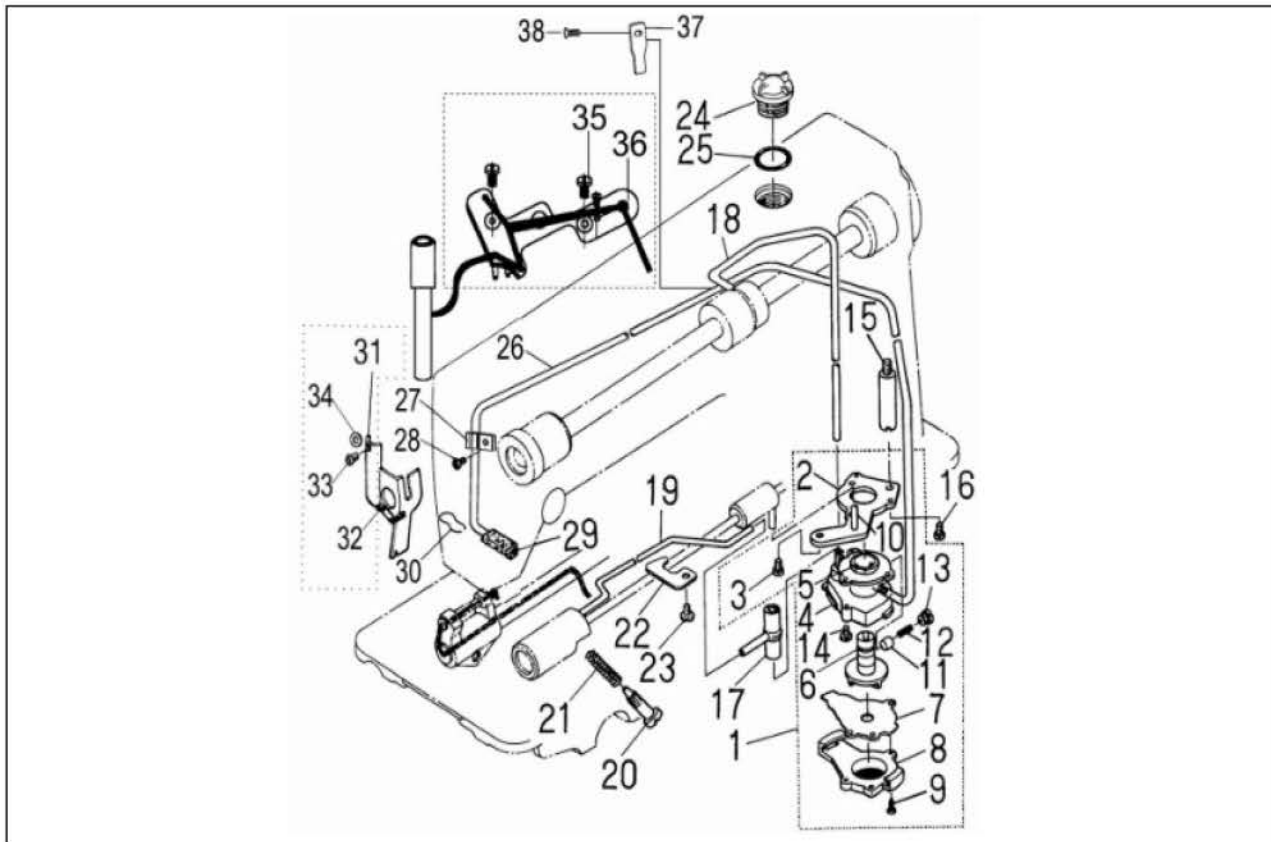


7. 送料调节分组件 Feed regulating components

序号 NO.	公司件号 Part NO.	名称 PartName	零件描述 Description	数量 Number
1	12811002	送料距旋钮 (新)	Feed dial	1
2	101S11022	送料距旋钮螺钉SM3/16 " ×28 L=18	Screw SM3/16 " ×28 L=18	1
3	10426006	送料调节螺柱	Feed regulator screw	1
4	10122016	倒送料轴O形圈	Rubber ring	1
5	10126015	送料距锁合销	Pin	1
6	10127010	送料距锁合簧	Spring	1
7	10401004	送料调节器	Feed regulator	1
8	10403017	送料调节器轴套	Feed regulator bushing	1
9	101S11023	送料调节器轴端螺钉 SM3/16 " ×28 L=6.5	Screw SM3/16 " ×28 L=6.5	1
10	10126016	倒送料连杆销	Feed regulator pin	1
11	101S11005	螺钉 SM9/64 " ×40 L=6	Screw SM9/64 " ×40 L=6	2
12	10105005	倒送料连杆	Feed regulator connecting rod	1
13	H05003	GB/T896-1986挡圈5	Snap ring	2
14	10102010	倒送料轴	Feed reverse shaft	1
15	10122017	倒送料轴O形圈	Rubber ring	1
16	10103021	倒送料轴轴套	Feed lever metal	1
17	300208	倒送料扳手	Reverse feed control lever	1
18	101S15013	倒送料扳手定位螺钉 SM1/4 " ×40 L=10	Screw SM1/4 " ×40 L=10	2
19	10127012	摆动板座复位簧	Adjusting link spring	1
20	10404005	倒送料曲柄	Feed reverse arm asm.	1
21	101S17003	螺钉 SM1/4 " ×40 L=20	Screw SM1/4 " ×40 L=20	1
22	10127011	倒送料拉簧	Feed reverse spring	1
23	11412081	拉簧固定板	Feed spring hook	1
24	11412070	摆动板座复位板	Adjusting link spring guide	1
25	101S11025	复位板螺钉 SM11/64 " ×40 L=7	Screw SM11/64 " ×40 L=7	1

JACK

高速带刀平缝机系列产品 5559 High speed lockstitch sewing machine with edge cutter

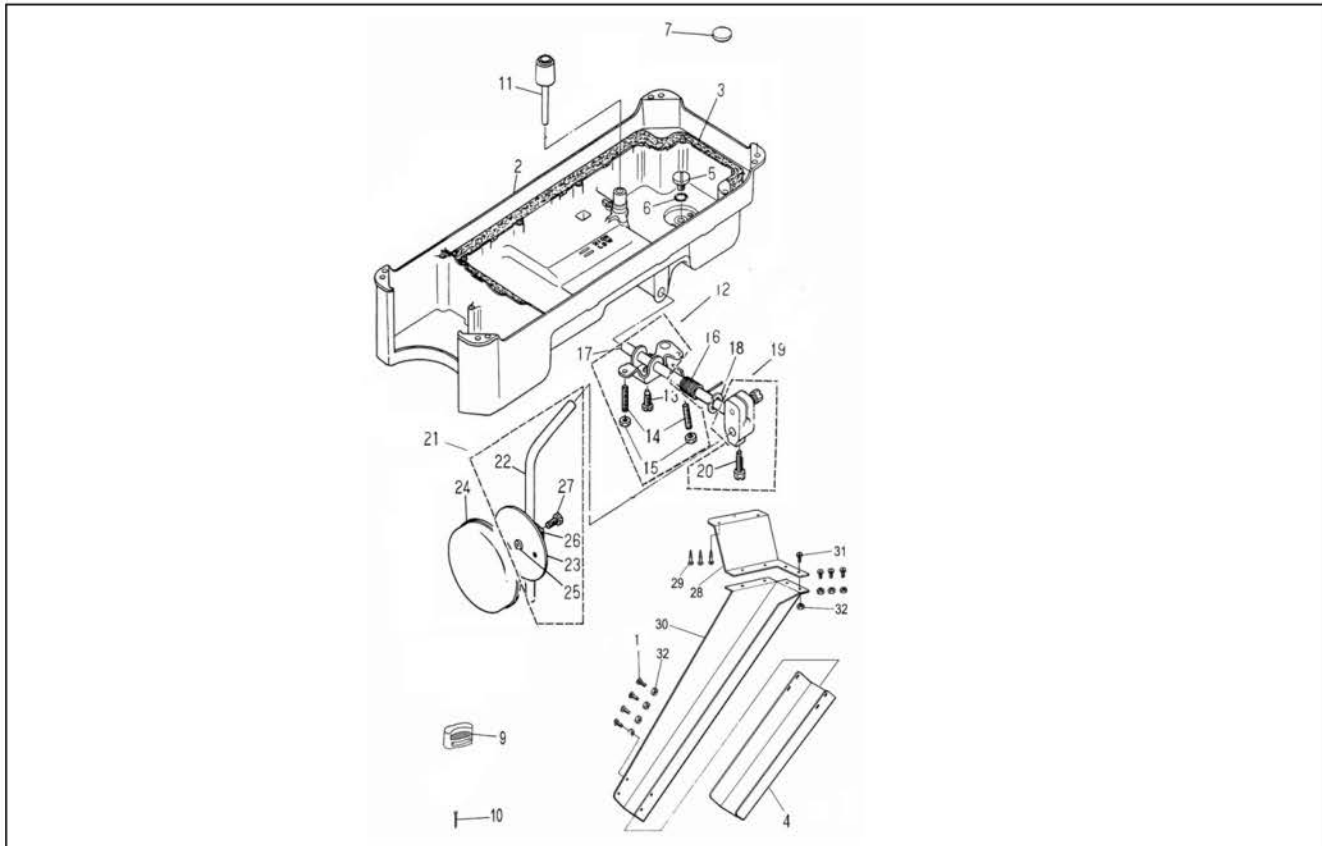


8. 润滑分组件 Lubrication components

序号 NO.	公司件号 Part NO.	名称 PartName	零件描述 Description	数量 Number
1	1012000100	油泵分部件	Lubricating oil pump asm.	1
2	10112020	油泵安装板	Oil pump installing base	1
3	101S11026	油泵安装螺钉 SM15/64"x28 L=9	Screw SM15/64"x28 L=9	1
4	10120001	油泵体	Oil pump	1
5	10103022	油泵体衬套	Oil pump bushing	1
6	10111003	油泵叶轮	Oil pump impeller	1
7	10112021	油泵叶轮托板	Oil pump impeller cover	1
8	10111007	油泵盖	Lubricating oil pump cover	1
9	101S30006	螺钉	Screw	1
10	10121001	下轴供油管	Hook driving shaft oil tube	1
11	10122018	回油柱塞	Plunger	1
12	101127013	柱塞簧	Plunger spring	1
13	101S30007	螺钉 SM9/32 " × 32 L=7	Screw SM9/32 " × 32 L=7	1
14	S04009	螺钉M3x8	Screw M3x8	3
15	101S30008	油泵连接螺柱 SM15/64 " × 28 L=7	Oil pump support SM15/64 " × 28 L=7	1
16	101S11011	螺钉 SM11/64 " × 40 L=9.5	Screw SM11/64 " × 40 L=9.5	1
17	10136001	供油管接头	Rubber joint	1
18	11421007	上轴供油管	Main shaft oil tube	1
19	10121006	旋梭供油管	Oil tube	1
20	101S30009	旋梭油量调节螺柱SM15/64 " × 28 L=25	oil adjusting screw SM15/64 " × 28 L=25	1
21	10127014	旋梭油量调节簧	Spring	1
22	10112022	旋梭供油管压板	Tube holder(lower)	1
23	101S11026	油泵安装螺钉SM15/64 " × 28 L=9	Screw SM15/64 " × 28 L=9	1
24	11211004	油窗	Oil slight window	1
25	10122019	油窗O型圈	Rubber ring	1
26	10121007	回油管	Oil return tube	1
27	10127015	回油毡夹	Oil return tube holder	1
28	101S11004	螺钉 SM3/16 " × 28 L=6	Screw SM3/16 " × 28 L=6	1
29	10123006	回油毡	Oil felt	1
30	10127015	回油毡夹	Oil felt presser	1
31	10412007	面部防油板(有油)	Arm oil shield(oil)	1
32	10423005	油线(根)	Oil wick	1
33	101S11027	螺钉 SM1/8 " × 44 L=4	Screw SM1/8 " × 44 L=4	1
34	10128005	垫片	Wahser	1
35	101S11010	螺钉 SM9/64 " × 40 L=11	screw SM9/64 " × 40 L=11	2
36	10112025	油线固定板	Oil wick setplate asm.	1
37	10112026	回油管压板	Presser	1
38	101S11033	螺钉 SM3/16 " × 28 L=5.8	Screw SM3/16 " × 28 L=5.8	1

JACK

高速带刀平缝机系列产品 5559 High speed lockstitch sewing machine with edge cutter

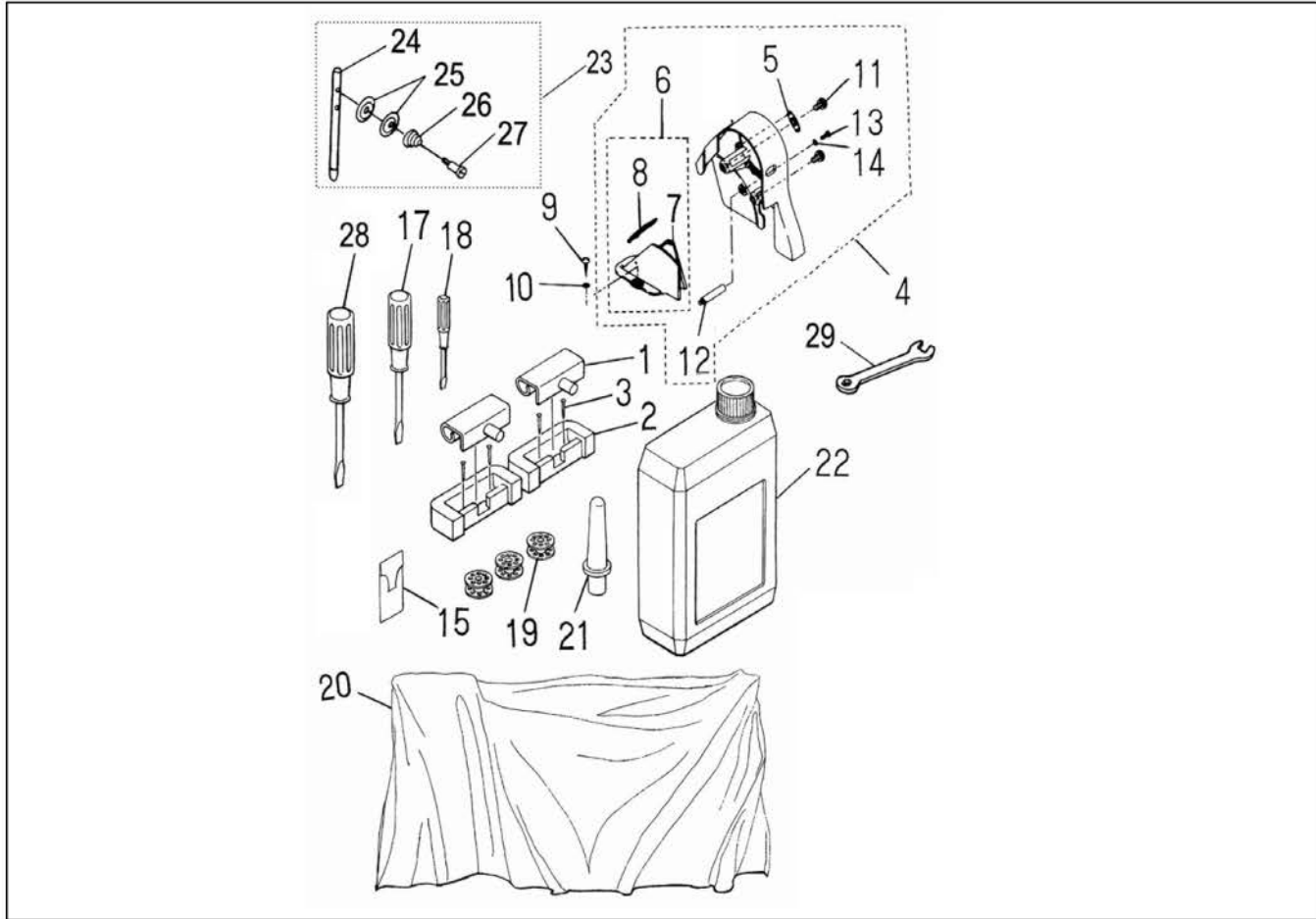


9. 油盘、膝抬压脚部分组件 Oil reservoir, knee lifter components

序号 NO.	公司件号 NO.	Part NO.	名称 PartName	零件描述 Description	数量 Number
1	S13002		导屑连接滑板螺钉 M4x8	Screw M4x8	4
2	12801006		油盘	Oil reservoir	1
3	10122020		油盘垫	Gasket	1
4	301015		导屑连接滑板	Waste material chute	1
5	101S11028		螺钉 SM5/16"x24 L=7	Screw SM5/16"x24 L=7	1
6	10122021		O型圈	Rubber ring	2
7	10131001		油盘磁铁	Oil reservoir magnet	1
9	10122023		油盘支架 (内销)	Oil reservoir rubber	2
10	101S3001		油盘座钉	Nail	4
11	10111005		抬压脚顶杆	Knee press lifter rod	1
12	10112027		抬压脚双向曲柄	Connecting rod, vertical	1
13	101S12002		螺钉 M6 L=26	Screw M6 L=26	1
14	101S15012		螺钉 M6 L=30	Screw M6 L=30	2
15	101S16004		双向曲柄限位调节螺母M6 L=4	Nut M6 L=4	2
16	10127016		双向曲柄扭簧	Spring	1
17	10102011		抬压脚轴	Knee press rod	1
18	H05010		GB/T896-1986挡圈11	Snap ring	2
19	10101008		抬压脚操纵杆节头	Bearing bracket	1
20	101S12003		螺钉 M8 L=16	Screw M8 L=16	1
21	1011202800		操纵杆部件	Knee press plate asm.	1
22	10112028		操纵杆	Knee press plate rod	1
23	10112029		操纵板	Knee press plate	1
24	10122024		操纵板软垫	Knee press plate cover	1
25	10122025		操纵杆垫	Rubber	1
26	10112030		操纵板节头	Knee press plate holder	1
27	101S12004		螺钉 M6 L=11	Screw M6 L=11	1
28	301012		导屑滑板支架	Wood material chute holder	1
29	128S30001		导屑滑板支架木螺钉M4x16	Wood screwM4x16	3
30	301011		导屑滑板	Wood material chute	1
31	S13001		导屑板滑板螺钉	Screw	4
32	N01015		GB/T6170-1986螺母M4(镀锌)	Nut M4	8

JACK

高速带刀平缝机系列产品 5559 High speed lockstitch sewing machine with edge cutter

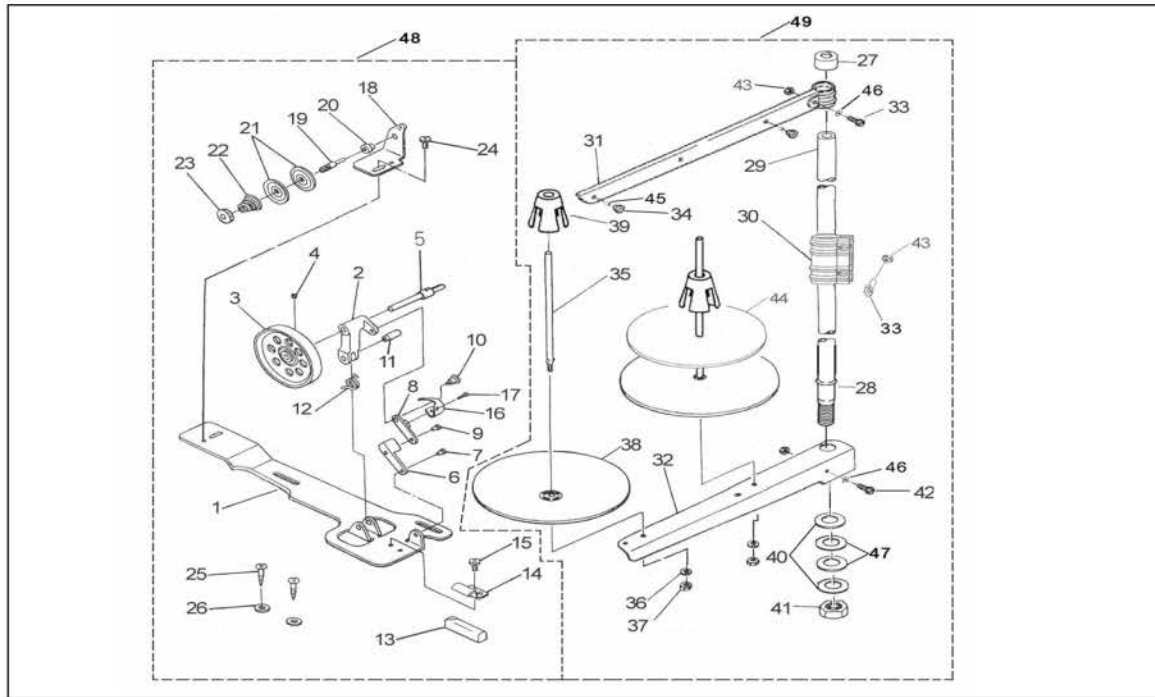


10. 机头附件(1) Machine head accessories(1)

序号 NO.	公司件号 NO.	Part	名称 PartName	零件描述 Description	数量Number
1	1011203100		机头连接钩部件	Machine hinge plate asm.	2
2	10122060		机头连接座钩	Machine hinge plate	2
3	101S30010		机头连接座钩螺钉	Nail	4
4	12811003		皮带罩(新)	Belt cover, A	1
5	10111008		前罩壳安装架	Belt cover, A cap	1
6	1011100900		上轮后罩壳部件	Belt cover, B asm.	1
7	10111009		上轮后罩壳	Belt cover, B	1
8	1011101000		后罩壳盖部件	Belt cover, B cover asm.	1
9	101S30011		木螺钉	Wood screw	2
10	10128006		垫圈	Washer	2
11	101S11029		前罩壳紧固螺钉	Belt cover, A screw	2
12	101S30012		后罩壳支柱	Belt cover support	1
13	101S11030		螺钉 SM3/16"×28 L=14	Screw SM3/16"×28 L=14	1
14	10128007		垫圈	Washer	1
15	10117001		机针	Needle	1包
17	10131003		螺丝刀(中)	Screw driver, mendium	1
18	10131004		螺丝刀(小)	Screw driver, small	1
19	10118003		梭心	Bobbin	1
20	10131005		机头罩	Machine head cover	1
21	10111011		机头支柱	Machine rest pin	1
22	1011101200		油箱组件	Oil reservoir asm.	1
23	1011300700		过线器部件	Needle thread guide pin asm.	1
24	10112008		过线柱	Needle thread guide pin	1
25	10112009		过线夹线板	Tension disc	2
26	10127004		过线夹线簧	Tension spring	1
27	101S30003		螺钉 SM3/16"×28 L=14	Screw SM3/16"×28 L=14	1
28	10131002		螺丝刀(大)	Screw driver, mendium	1
29	20131042		扳手7#	Spanner 7#	1

JACK

高速带刀平缝机系列产品 5559 High speed lockstitch sewing machine with edge cutter

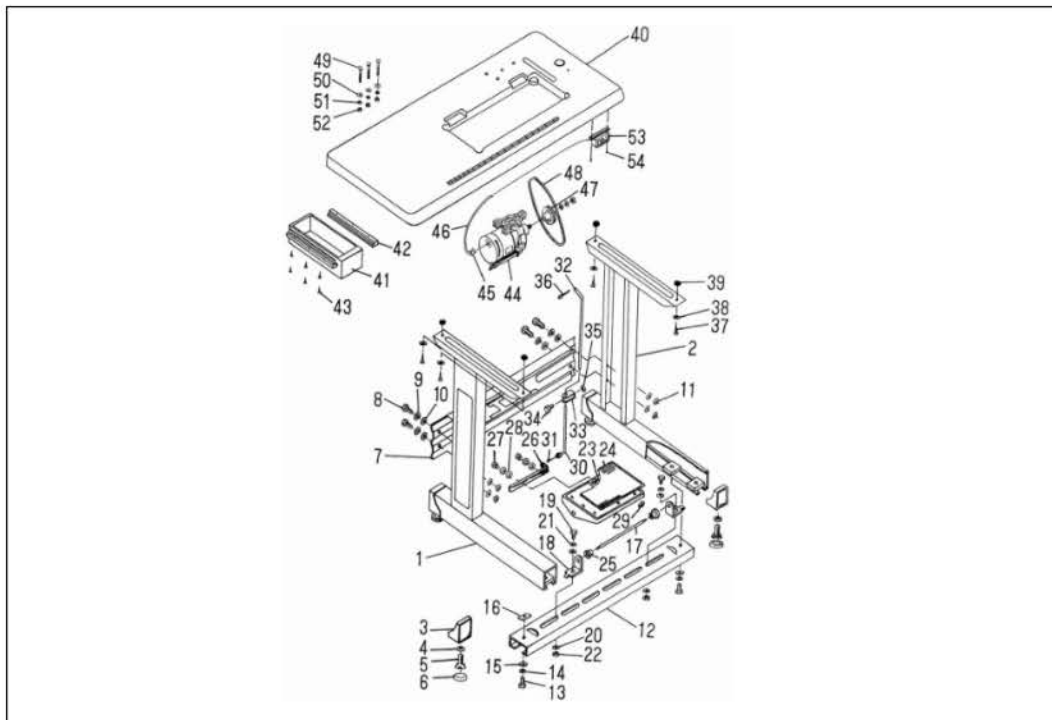


10. 机头附件(2) Machine head accessories(2)

序号 NO.	公司件号 NO.	Part	名称 PartName	零件描述 Description	数量 Number
1	10112056	绕线座	Bobbin winder base asm.	1	
2	10101009	绕线架	Thread winder base asm.	1	
3	10101010	绕线轮	Thread winder asm.	1	
4	S04006	螺钉	Screw	1	
5	10102012-1	绕线轴	Bobbin winder shaft	1	
6	10112033	绕线座连杆	Connevtng rod	1	
7	10126018	绕线座连杆销	Connevtng rod pin	1	
8	10112034	绕线架连杆	Bobbin winder frame rod	1	
9	10126018	绕线架连杆销	Bobbin winder frame rod pin	1	
10	10120006	绕线架连杆轴位螺钉	Screw	1	
11	10126019	绕线架销	Bobbin winder frame pin	1	
12	10127017	绕线架簧	Bobbin winder frame spring	1	
13	10122027	绕线轮制动垫	Rubber brake	1	
14	10112035	制动垫夹	Presser plate	1	
15	S04006	螺钉	Screw	1	
16	10112036	满线跳板簧	Bobbin winder spring	1	
17	S04017	过线夹螺钉	Hinge Screw	1	
18	10112037	过线架座	Thread tension bracket asm.	1	
19	101S30013	螺钉	Screw	1	
20	10108005	过线夹线板挡圈	Bobbin winder tension disc collar	1	
21	10112038	过线夹线板	Tension disc	2	
22	10127018	过线夹线簧	Tension spring	1	
23	101S16005	螺母	Nut	1	
24	S04006	螺钉	Screw	1	
25	101S30014	木螺钉	Wood screw	2	
26	10128008	垫圈	Washer	2	
27	20131019	线架杆顶防护橡皮	Spool rest rod rubber cap	1	
28	20131002	线架杆下节	Spool rest rod (lower)	1	
29	20131001	线架杆上节	Spool rest rod (upper)	1	
30	20131003	线架杆接头	Spool rested joint	1	
31	10112040	上线架过线杆	Thread guide asm.	1	
32	10112057	下线架过线杆	Thread guide asm.	1	
33	S04050	螺钉	Screw	3	
34	10113010	过线圈(外)	Thread guide ring	2	
35	20131006	线盘钉	Spool pin	2	
36	W02027	弹簧垫圈	Spring washer	2	
37	N01034	螺母	Nut	2	
38	20131007	线盘	Spool rest	2	
39	20131008	线团防松垫	Spool vibration stopper	2	
40	W01048	垫圈	Washer	2	
41	N02004	螺母	Nut	1	
42	S04051	螺钉	Screw	1	
43	N01034	螺母	Nut	4	
44	20131010	线盘垫	Spool rest cushion	2	
45	10113011	过线圈(内)	Thread guide ring	2	
46	W01047	垫圈	Washer	2	
47	10122106	橡胶垫圈	Washer	2	
48	1013100600	绕线器组件	Bobbin winder unit	1	
49	1013100700	线架组件	Thread Stand Components	1	

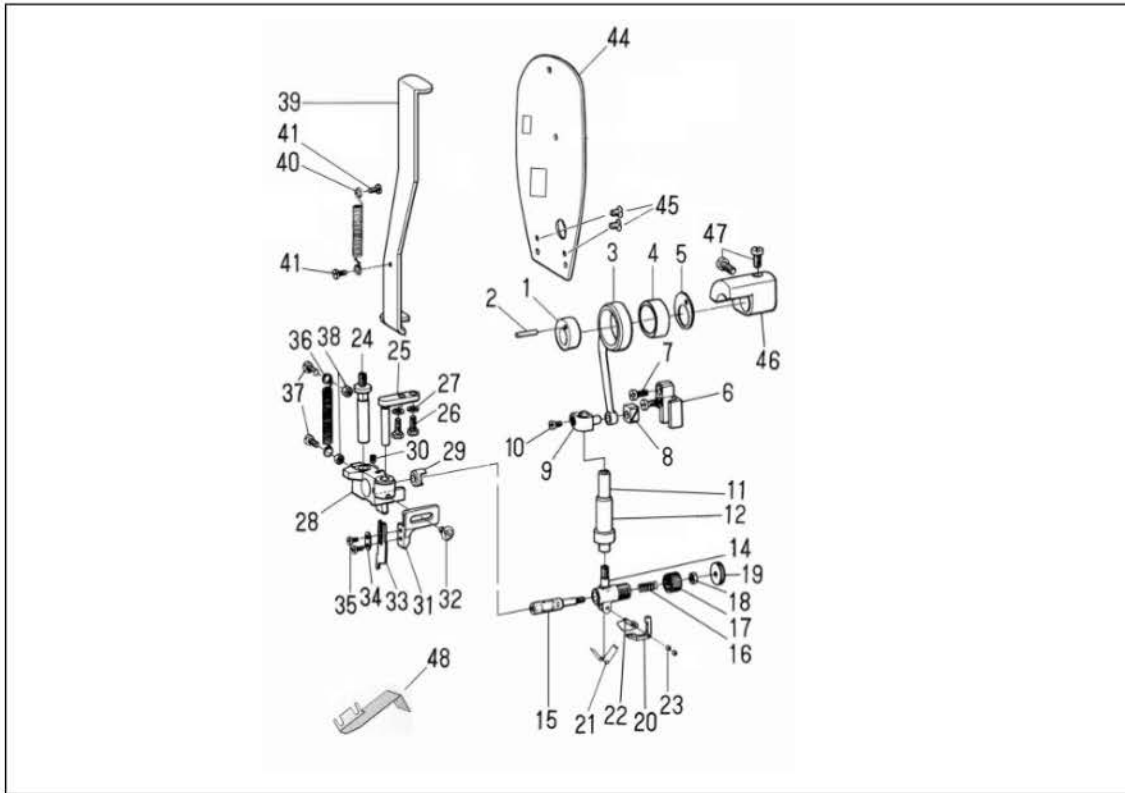
JACK

高速带刀平缝机系列产品 5559 High speed lockstitch sewing machine with edge cutter



11. 机架、台板、电器分组件 Machine table electric components

序号 NO.	公司件号 NO.	Part NO.	名称 PartName	零件描述 Description	数量Number
1	1011204200		过线部件 (左)	Stand side asm.left	1
2	1011204300		过线部件 (右)	Stand side asm.right	1
3	10111015		边架座套	Rubber cushion	4
4	N01010		螺母	Nut	4
5	101S30015		调节座	Screw	4
6	10122029		调节座橡胶	Space ring	4
7	10112044		横档	Stand side support	1
8	L02014		横档连接螺栓	Screw	4
9	10128011		垫圈	Space washer	4
10	W01010		垫圈	Washer	8
11	N01011		螺母	Nut	4
12	10112045		踏板轴档	Treadle brace	1
13	L02014		踏板轴档螺栓	Screw	2
14	10128011		垫圈	Spring washer	2
15	W01010		垫圈	Washer	2
16	10112046		踏板轴档定位螺母板	Treadle brace locknut plate	2
17	10102013		踏板轴	Treadle shaft	1
18	10112047		踏板轴座	Treadle bravket	2
19	L02014		踏板轴座螺栓	Screw	2
20	W01010		垫圈	Washer	4
21	10128011		弹簧垫圈	Spring washer	2
22	N01011		螺母	Nut	2
23	10112048		踏板	Trcable	1
24	10122030		踏板垫	Gas ket	1
25	10103023		踏板衬套	Collar	2
26	10112049		踏板杠杆	Treadle pitman	1
27	L02015		踏板杠杆螺栓	Screw	2
28	W01003		垫圈	Washer	4
29	N01012		螺母	Nut	2
30	10112050		下拉杆	Pitman rod, lower	1
31	10127019		拉杆弹簧	Spring	1
32	10112051		上拉杆	Pitman rod, upper	1
33	10112052		拉杆接头	Joint	1
34	L02015		拉杆接头螺栓	Joint screw	1
35	N01012		螺母	Nut	1
36	10129001		上拉杆开口销	Pitman rod split pin(upper)	1
37	101S30016		台板木螺钉	Table wood screw	4
38	10128012		垫圈	Table wood screw washer	4
39	10128013		台板垫圈	Table washer	4
40	10132002		台板	Table	1
41	10111016		抽斗	Drawer	1
42	10111017		抽斗导轨	Drawer rail	2
43	101S30017		抽斗导轨木螺钉	Drawer rail wood screw	6
44	10133001		GFC4024	Motor GFC4024 motor	1
45	10130002		电机接线插头	Motor connecting wire plug	1
46	10130003		电机接线	Motor wire	1
47	10135004		电动机带轮	Motor pulley	1
48	10135002		机头传动带	Machine driving belt	1
49	101S30018		螺钉	Screw	3
50	10128014		垫圈	Washer	3
51	10128011		垫圈弹簧	Spring washer	3
52	N01011		螺母	Nut	3
53	10130004		电源开关	Power source switch	1
54	101S30019		电源开关木螺钉	Power source switch wood screw	2

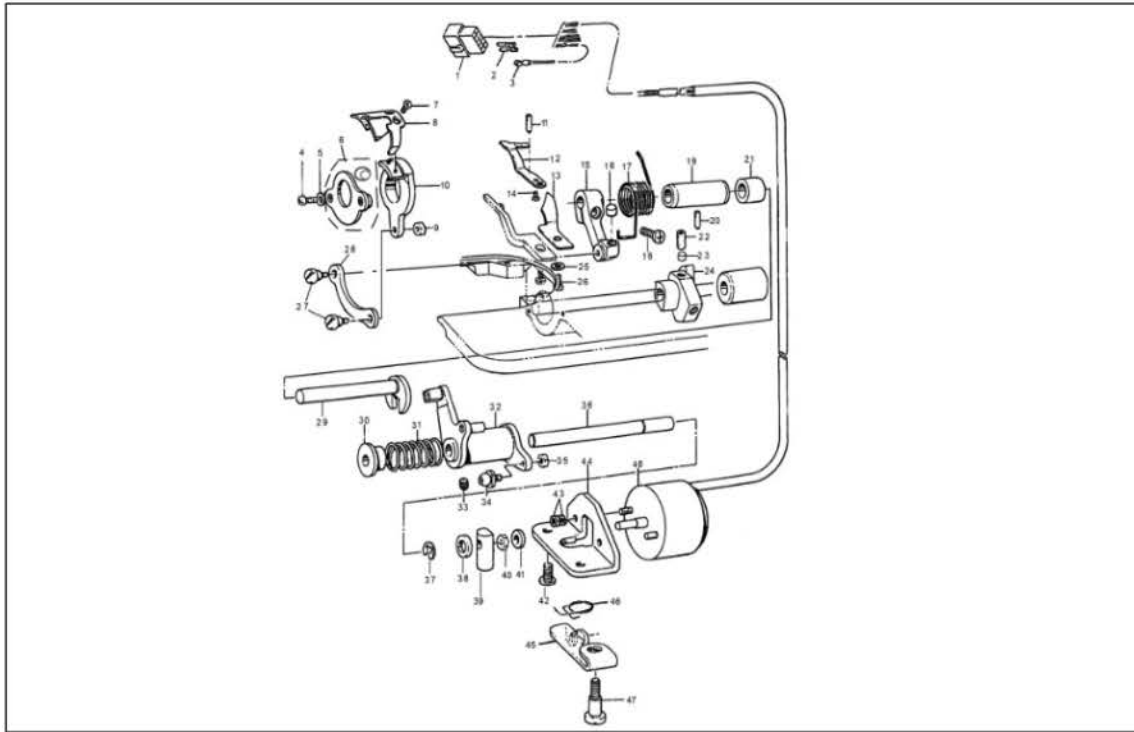


12. 切刀专用部件 Knife Components

序号 NO.	公司件号 NO.	Part NO.	名称 PartName	零件描述 Description	数量Number
1	12710002		切刀凸轮	Knife cam	1
2	12726001		切刀凸轮销	Pin	1
3	12705003		切刀连杆	Knife driving rod	1
4	1272400100		切刀连杆轴承	Knife needle bearing	1
5	12812005		切刀凸轮盖板	Thrust plate	1
6	12809001		切刀滑块导轨	Slide block guide	1
7	101S11011		旋梭定位钩螺钉	Screw SM11/64"x40 L=9.5	2
8	12809002		切刀滑块	Crank slide block	1
9	12804002		切刀轴连接柱	Knife driving stud connection asm	1
10	209S11009		止摆扎头螺钉	Screw SM9/64"x40 L=9.5	1
11	12802006		切刀轴 (DLC)	Knife driving stud (DLC)	1
12	12802011		切刀轴 (有油)	Knife driving stud (oil)	1
14	12803001		切刀轴衬套	Bushing	1
14	12804003		切刀离合支架	Knife driving rod clutch retainer	1
15	12826001		切刀离合销	Knife driving rod clutch pin	1
16	12827001		切刀离合销簧	Spring	1
17	12801002		切刀离合销盖	Cap	1
18	201S16003		N03螺母	Nut	1
19	12811001		切刀离合销旋钮	Knob	1
20	12805001		切刀放松杆	Knife release lever	1
21	12827002		切刀放松杆簧	Spring	1
22	12826002		切刀放松杆销	Pin	1
23	N01018		GB/T6170-1986六角螺母	GB/T6170-1986M2.5 Nut M2.5	2
24	12802003		切刀座轴	Knife driving block stud	1
25	12805002		切刀座导杆	Guide stud for Knife driving block	1
26	209S12001		切刀座导杆螺钉	Screw SM11/64"x40 L=8	2
27	12828001		切刀座导杆螺钉垫圈	Washer	2
28	1280100300		切刀座部件组件	Knife driving block asm	1
29	12803003		切刀座部件右套	Knife driving block right bushing	1
30	125S15003		牙架连杆挡圈螺钉	Screw SM11/64"x40 L=5	1
31	12801004		切刀架	Knife holder	1
32	128S17001		切刀架螺钉	Screw SM11/64"x40 L=8	1
33	12819001		上切刀	Knife	1
34	12812006		上切刀压板	plate	1
35	101S11018		送料牙螺钉	Screw SM1/8"x44 L=6	1
36	12827003		切刀座拉簧	Tension spring	2
37	101S11011		旋梭定位钩螺钉	Screw SM11/64"x40 L=9.5	1
38	201S16003		N03螺母	Nut	2
39	12812007		切刀座复位板	Knife positioning plate	2
40	12827004		复位板拉簧	Tension spring	1
41	128S20001		轴位螺钉	Screw SM9/64"x40 l=4.5	2
44	12812008		复位板罩板	Face plate cover	1
45	101S17002		针板螺钉	Screw SM11/64"x40 L=7.5	2
46	12801005		切刀连杆平衡锤	Balance	1
47	402S11012		螺钉SM158/64"x28 L=9	Screw SM15/64"x28 L=9	2
48	12812009		碎布屑盖 (5559W)	Waste material cover (5559W)	1

JACK

高速带刀平缝机系列产品 5559 High speed lockstitch sewing machine with edge cutter

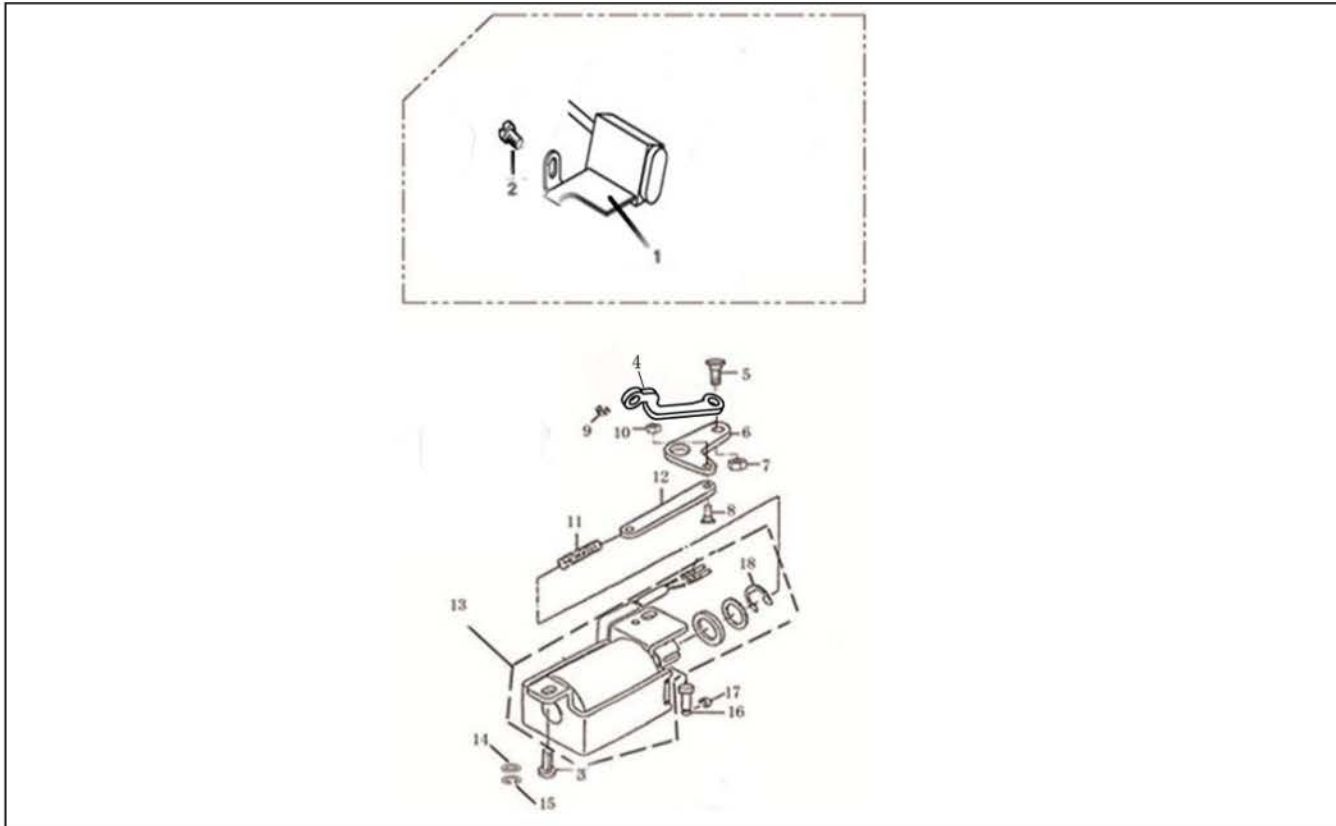


13. JK-5559WB切线装置部件 Thread trimmer components

序号 NO.	公司件号 NO.	Part NO.	名称 PartName	零件描述 Description	数量 Number
1	11230004		14孔接线器	Housing 14P	1
	11230015		12孔接线器	Housing 12P	1
2	11230005		电线插针	Pin contact	1
3	11212025		地线	Ground wire asm.	1
4	113S11001		螺钉	Screw SM11/64"x40 L=12	2
5	10128003		牙架座螺钉垫圈	Washer	2
6	11312004		刀架压板组件	Partiality shank asm.	1
7	113S17002		活动刀固定螺钉	Screw	2
8	11319003		活动刀(厚料长槽)	Motorial knife	1
9	113S16001		螺母	Nut SM11/64"x40	1
10	11307001		剪线刀架	Knife bracket	1
11	113S15002		定刀调节螺钉	Screw	1
12	11319001		定刀	Secant knife	1
13	11312003		护针片	Protect needle patch	1
14	113S17001		螺钉 SM9/64"x40 L=5	Screw SM9/64"x40 L=5	1
15	11304001		曲柄	Thread shear rock asm	1
16	11322001		驱动曲柄止动块	Positioning block	1
17	11327001		弹簧	Spring	1
18	S05004		螺钉 M5 L=14	Screw M5 L=14	2
19	12803008		切线轴套	Thread shear cam rock asm assy	1
20	113S14002		螺钉 SM11/64"x40 L=5.5	Screw SM11/64"x40 L=5.5	1
21	11503005		驱动曲柄轴衬套	Short bush	1
22	116S14005		螺钉 SM1/4"x40 L=10	Screw SM1/4"x40 L=10	2
23	11309030		凸轮顶柱	Pole	2
24	11310004		凸轮	Thread shear cam	1
25	W02004		M6弹垫 GB/T93-1987	Washer 6	1
26	201S11009		螺钉 SM9/64"x40 L=5.5	Screw SM9/64"x40 L=5.5	1
27	113S20001		连杆螺钉 SM11/64"x40 L=5.5	Screw SM11/64"x40 L=5.5	2
28	11312005		连杆	Knife shaft connecting rod	1
29	12802015		切线凸轮曲柄轴	Thread shear rock asm shaft	1
30	11322002		扭簧端盖	Spring cover	1
31	11327002		弹簧	Spring	1
32	1130400500		剪线驱动组件	Thread shear rock arm shaft	1
33	116S14003		针杆曲柄销定位螺钉	Screw	1
34	11324001		滚柱	Rooll shaft assy	1
35	113S16001		螺母 SM11/64"x40 D=3	Nut SM11/64"x40 D=3	1
36	11302002		轴	Thread shear shaft	1
37	H03006		挡圈	Retaining ring	1
38	11322003		电磁铁缓冲垫	Magnetic plug cushion mat	1
39	11309001		切线电磁铁顶销	Washer	1
40	112S16006		螺母 SM1/4" x40	Nut SM1/4" x40	1
41	001004		型圈 4x1.8	Washer	1
42	101S11026		油泵安装螺钉	Screw	1
43	N01001		螺母 M4	Nut M4	2
44	11312006		切线磁铁支架	Magnetic plug cushion mat	1
45	11312007		松线座	Thread loose seat	1
46	11327003		弹簧	Spring	1
47	113S20002		螺钉 SM1/4" x28 L=13	Screw SM1/4" x28 L=13	1
48	1133001100		剪线电磁铁组件	Magnetic plug	1

JACK

高速带刀平缝机系列产品 5559 High speed lockstitch sewing machine with edge cutter

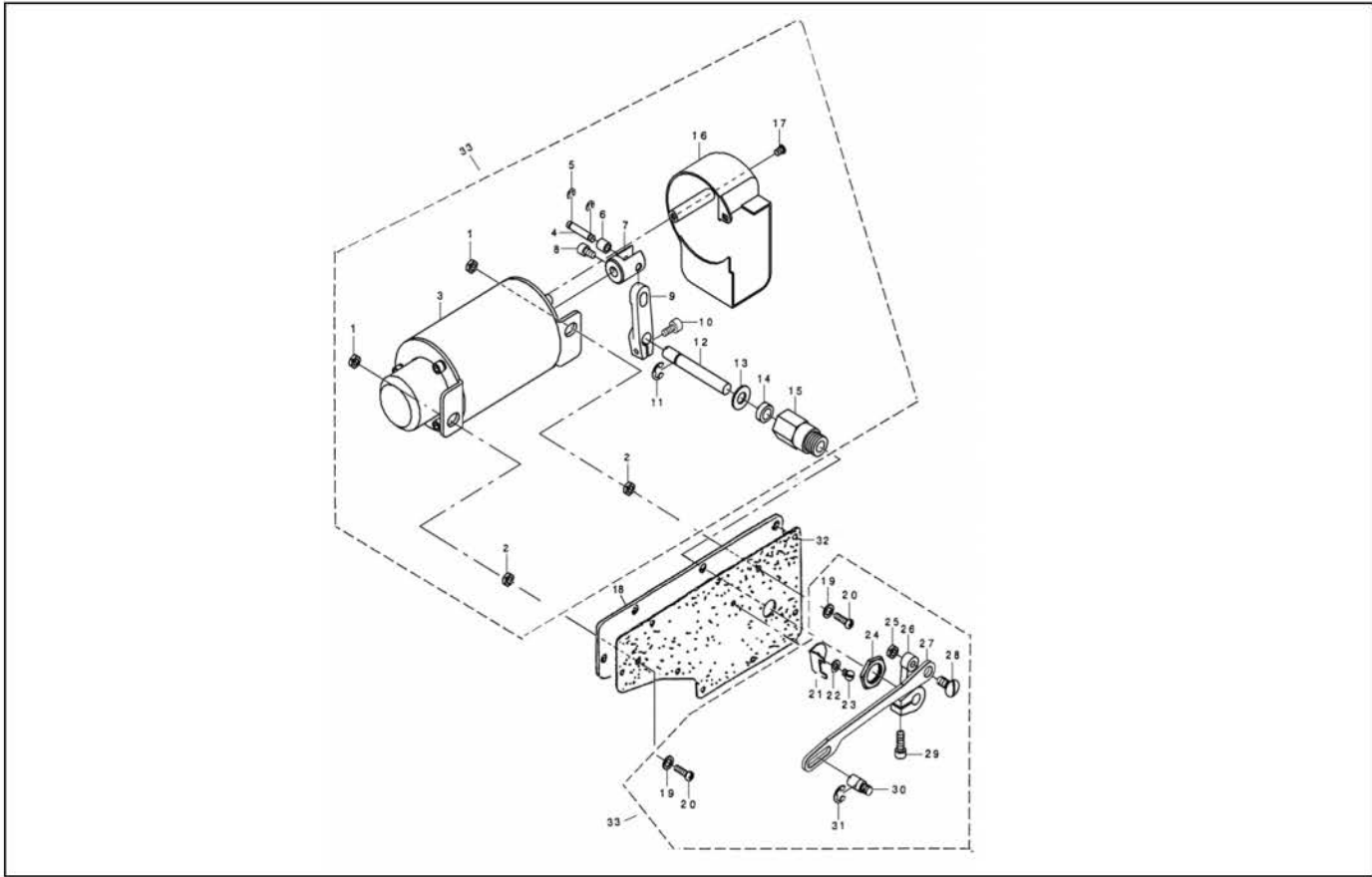


14. JK-5559WB自动倒送料开关组件 Automatic reverse feed component

序号 NO.	公司件号 NO.	Part NO.	名称 PartName	零件描述 Description	数量 Number
1	1283000100		自动倒送料开关组件	Automatic reverse feed component	1
2	101S11004		螺钉 SM3/16 " × 28 L=7	Screw SM3/16 " × 28 L=6	1
3	116S30003		螺钉SM15/64 " × 28 L=14.5	Screw SM15/64 " × 28 L=14.5	2
4	11212029		自动倒送料拉杆	Reverse feed connecting shaft	1
5	112S20001		曲柄长螺钉	Screw	1
6	11204003		自动倒送料曲柄	Connecting arm asm.	1
7	112S16007		曲柄长螺母	Nut	1
8	112S20002		曲柄短螺钉	Screw	1
9	H05009		开口挡圈	E-ring	1
10	1112S16008		曲柄短螺母	Nut	1
11	11227006		自动倒送料连杆顶弹簧	Plunger spring	1
12	11312009		自动倒送料连杆	Reverse feed connecting link	1
13	1143003400		自动倒送料电磁铁	Reverse feed magnet asm.	1
14	11628005		垫片	Washer	2
15	W02004		垫圈	Washer	2
16	11226005		连杆销	Plunger arm pin	1
17	H05009		开口挡圈	E-ring	1
18	H05014		开口挡圈	E-ring	1

JACK

高速带刀平缝机系列产品 5559 High speed lockstitch sewing machine with edge cutter

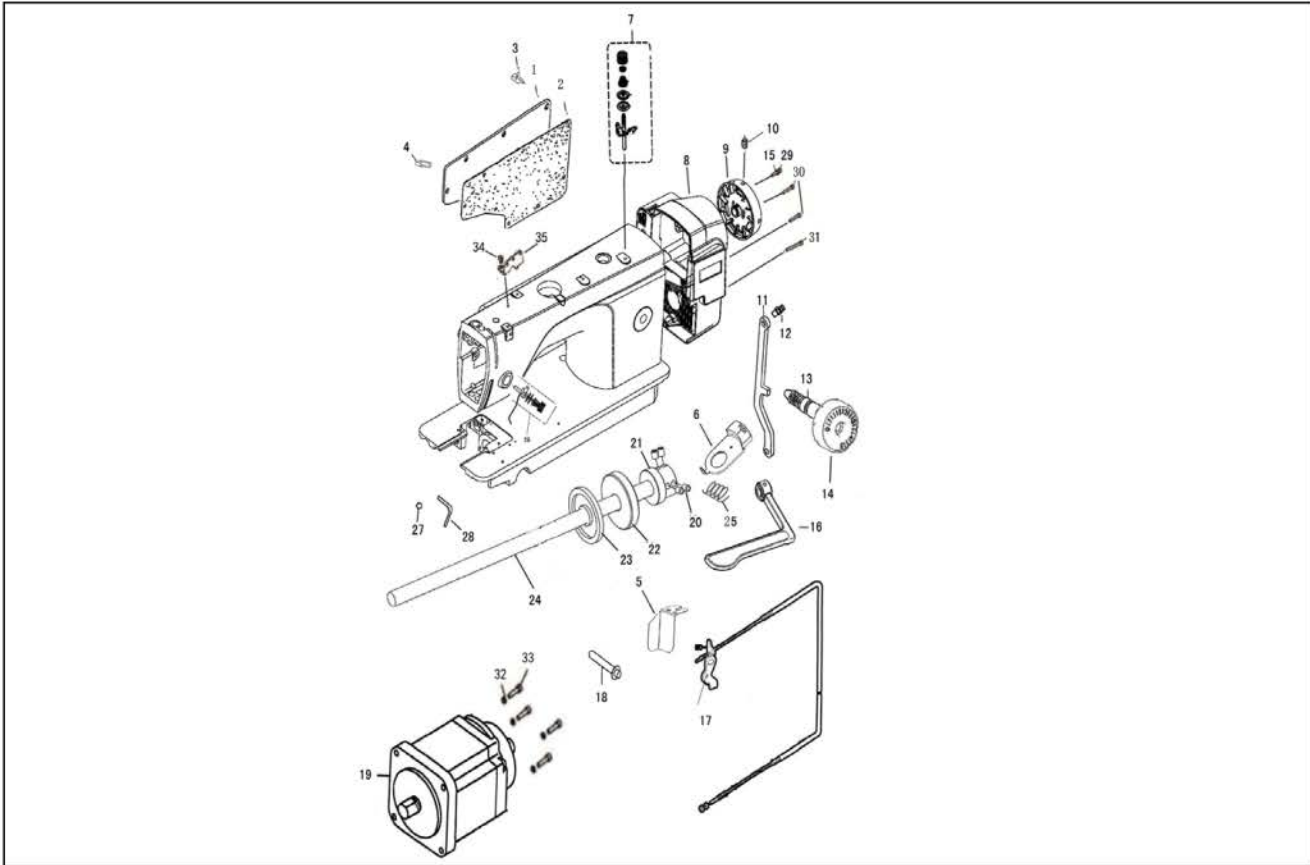


15. JK-5559WB自动抬压脚组件Auto lifter components

序号 NO.	公司件号 NO.	Part NO.	名称 PartName	零件描述 Description	数量Number
1	112S16012		支承架小螺母 M6	Nut M6	2
2	112S16013		支承架大螺母 M6	Nut M6	2
3	11230013		自动抬压脚电磁铁组件	magnetic plug asm	1
4	11226007		电磁铁曲柄销	Magnetic plug pin	1
5	H05003		挡圈5	E-ring 5	2
6	11203003		曲柄套筒	Sleeve	1
7	11201003		电磁铁芯轴接头	Magnetic plug pin tie-in	1
8	S05038		接头螺钉	Screw	1
9	11204005		电磁铁曲柄	Magnetic crank	1
10	S05013		螺钉 M5 L=14	Screw M5 L=14	1
11	H05011		挡圈9	E-ring 9	1
12	11202003		自动抬压脚轴	Automated presser foot shaft	1
13	11228003		套筒垫片	Washer	1
14	11222016		油封	Oil seal	1
15	11203002		套筒	Sleeve	1
16	11211006		自动抬压脚罩壳	Wiper cover	1
17	S04022		罩壳螺钉	Screw	2
18	301701		后窗板	Side plate	1
19	11228001		支架支承螺钉垫片	Washer	1
20	112S11015		支架支承螺钉 M6 L=12	Screw M6 L=12	1
21	11212037		拉杆支架	Pull rod bracket	1
22	11228002		拉杆支架垫片	Pull rod bracket washer	1
23	112S11014		拉杆支架紧固螺钉 SM11/64"x40 L=5	Screw SM11/64"x40 L=5	1
24	112S16011		套筒螺母 M16x1.5	Nut M16x1.5	1
25	112S16012		拉杆螺母 M6	Nut M6	1
26	11204004		自动抬压脚曲柄	Crank	1
27	11412075		拉杆	Pull rod	1
28	112S20008		拉杆螺钉 M6 L=15	Screw M6 L=15	1
29	S05004		螺钉 M5 L=14	Screw M5 L=14	1
30	112S20009		抬压脚拉杆螺钉 SM3/15" x32 L=4.5	Screw SM3/15" x32 L=4.5	1
31	H05013		挡圈6	E-ring 6	1
32	11422063		后窗板垫	Gasket	1
33	1123002000		自动抬压脚组件(无拉杆)	Autolifter components (no bars)	1

JACK

高速带刀平缝机系列产品 5559 High speed lockstitch sewing machine with edge cutter



16. 十八、JK-5559WB专用部件 JK-5559WB Components

序号 NO.	公司件号 NO.	Part NO.	名称 PartName	零件描述 Description	数量 Number
1	301512		后窗板	Side plate	1
2	10122104		后窗板垫	Gasket	1
3	11412068		电线压板	Cord hold	1
4	10113004		右线钩	Arm thread guide A	2
5	12812028		碎布屑下料挡板	Blanking baffle	1
6	11412079		按键	Push-button	1
7	1141300600		底线夹线器	Thread tension asm.	1
8	11411034		电机罩	Motor cover	1
9	300822		手轮	Hang wheel	1
10	S10009		GB/T80-1985螺钉 M6×8	Screw M6×8	4
11	11405015		倒送料连杆	Feed regulator connecting rod	1
12	11426021		倒送料连杆销	Feed regulator pin	1
13	11426019		送料调节螺钉	Feed regulator screw	1
14	11411035		送料距旋钮	Feed dial	1
15	W01009		GB/T97.1-1985垫圈 5	flat washer	1
16	301781		倒送料扳手	Reverse feed control lever	1
17	1141206000		松线顶板组件	Thread release wire asm	1
18	11426020		松线辅钉	Tension release supporting	1
19	11433013		电机	Motor	1
20	S10037		GB/T80-1985固定螺钉 M6×0.75×8	Screw M6×0.75×8	4
21	11403040		上轴连接器	Up shaft linker	1
22	B07042		GB/T279轴承6907Z	Bearing	1
23	11422028		上轴油封	Oil seal unit	1
24	12802012		上轴	Up shaft	1
25	11427035		针距按键簧	Push-button spring	1
26	1141300400		小夹线器组件	Small thread tension asm.	1
27	401S16001		螺母	Screw	1
28	11413011		固定式缓线钩	Presser bar thread guide	1
29	114S13001		JK-直驱电机螺钉M5×20	Screw	1
30	114S30001		螺栓(内六角)	bolt	2
31	S05146		GB/T70.1 螺钉 M5×40	Screw	1
32	W02026		弹垫	Spring washer	4
33	114S13001		JK-直驱电机螺钉M5×20	bolt	4
34	101S11004		挑线杆护罩螺钉	Screw	1
35	13512004		三孔线勾	3-hole wire hook	1